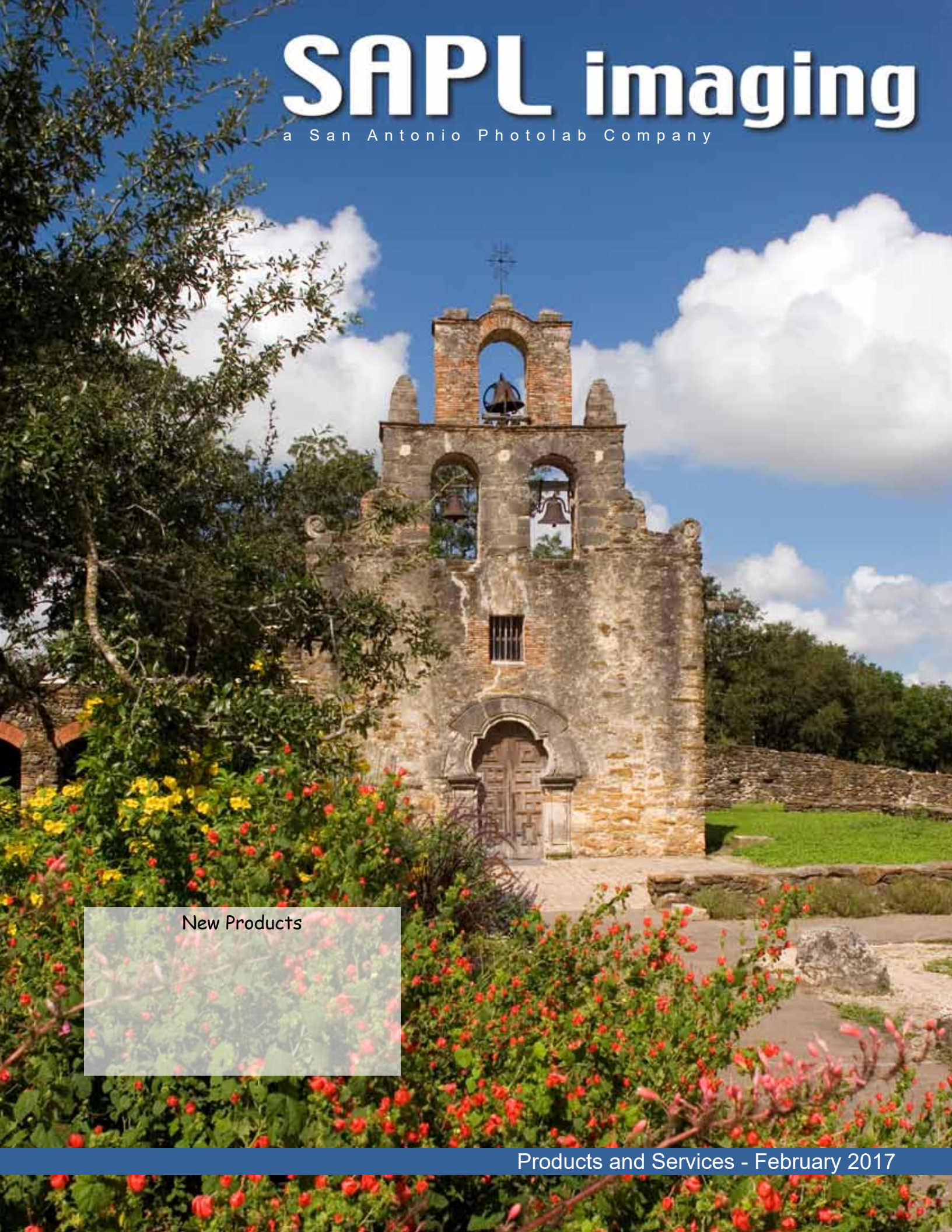


SAPL imaging

a San Antonio Photolab Company



New Products

Products and Services - February 2017

Contents

Welcome to SAPL Imaging

Business Information	4
----------------------	---

Image Uploading and Color Management

Saving and Uploading Image Files	6
Image Color Correction	7
Color Management	7

Ordering and Design Software

webStudio Manager	11
SAPL Press Software powered by Digilabs	11
ProSelect by Time Exposure	11
MyProPhotosOnline.com	12
LabPrints	12

Digital Photo Prints, Proofs & Packages

Digital File Proofing – Print Only	14
Digital File Proofing – Color Corrected	14
Border Proofs	14
Digital Photographic Prints - Lustre or Glossy Paper	15
Digital Photographic Prints - Custom Sizes	16
Digital Photographic Prints - Metallic & Deep Matte Papers	17
Retouching Services	19
Gallery Wraps	20
Wedding and Portrait Albums	21
Lay-Flat Albums	21
Digital Photographic Proof Books	22
Pic-a-Pak Event & School Digital Packages	23
Sports and Activities Digital Packages	24
Photo Greeting Cards	27
Fine Art (Inkjet) Prints	27

Impressions Press Products

Ordering Press Products	29
About Our Press Papers	29
Press Printed Greeting Cards	30
Press Printed Proof Books - Soft Cover	33
Press Printed Photo Books - Hard Cover	34
Press Printed Photo Books - Soft Cover	37
Press Printed Accordion Mini Books	38
Press Printed Photo Calendars	39
Press Printed Bookmarks	39
Press Printed Rep Cards	40
Press Printed Business Cards	40
Press Printed Posters	41
Press Printed Stickers	41
Press Printed Promotional Comp Cards	41
Custom Note Pads	42

continued next page

Playing Cards 42

Finishing Services

Print Mounting 44
Canvas Mounting - Photographic Prints 45
Print Laminating 46
Specialty Print Mounting 46
Print Coating and Texturing 47

Film Services

Film Processing - Roll & Sheet 49
Film Scanning – Roll Film 50
Film Scanning – Cut Negative/Transparency Film 50
Roll Film Proofing 51
Event Photography Package Printing (Film) 51
Greeting Cards (Film) 52
B&W Optical Printing 52
35mm Slides and Dupes 52

Welcome to SAPL Imaging

SAPL Imaging, and our parent company San Antonio Photolab Inc., have served the professional photography market for over 35 years. From our San Antonio photo and digital printing location, we service customers throughout Texas and the US. Our business has grown over the years, but some things never change: Our commitment to customer service and unsurpassed quality.

Business Information

Contact Information

Lab location and mailing address:

SAPL Imaging
722-3 Isom Road
San Antonio, TX 78216

Phone 210-828-8622
800-887-5290

email customerservice@saphoto.com (customer service)
technicalsupport@saphoto.com (technical support)

Web www.saphoto.com

Becoming a Customer

Visit www.saphoto.com and complete our new customer application, or call 800-887-5290. If you already have an SAPL account but need to open an online account, complete the same online application. You can open a new account in a few minutes with monthly billing to your credit card. Per-order payment is also available.

Payment for Orders

Business Accounts –Open accounts are offered as a convenience to prompt paying customers. Applications for open accounts are available upon request. Statements are sent out on the last day of each month. Statements show the date invoice number, and amount of purchase made the previous month. They also reflect any payments received and credit memos issued. We ask that you pay from these statements. Our terms are net 10 days. Accounts not paid in full by the end of the month are considered delinquent and are subject to suspension of privileges. Orders will automatically be placed on COD until payment for past due amount is made in full.

Credit Card Accounts - We accept Visa, Master Card, Discover and American Express. Please call the lab with your payment information.

Minimum Order

Certain products have minimum order requirements. Contact customer service for details.

Rush Service

Rush service is available for jobs requesting same-day service or for jobs delivered after 1:00 PM requesting 10:00 AM next-day service. There is a 100% service charge for rush orders.

Order Cancellations and Changes

Since we begin processing your order within minutes of receiving it, any changes must be made soon after submission. Use your order confirmation email to make and changes; please do not call the lab.

Shipping

For orders where shipping is requested, Lone Star Overnight is our preferred shipper for in-state orders. We also use UPS, Fed Ex, and USPS. Carrier shipping charges will be added to the invoice unless other arrangements have been made.

Remakes

If there is an error in your order, or it has been damaged, please call customer service immediately for replacement. Remakes are only with the same image, crop and finishing services as the original order. If you wish to reprint an item with changes to the image, crop or services, please submit a new order.

Liability

Submission of any film, slide, negative, digital file, or any other material to SAPL Imaging, inc. for processing, printing or any other handling constitutes an AGREEMENT by you that any damage or loss by our company, subsidiary or agents, even though due to the negligence or other fault of our company, subsidiary or agents, will only entitle you to replacement with a like amount of unexposed film and processing. Except for such replacement, the acceptance by our company, subsidiary and/or agents of the film, print, slide, negative or digital file is without other warranty or liability, and recovery for any incidental or consequential damages is excluded.

Turnaround Time

Jobs submitted online or in-store before 10:00 AM are available for pickup or shipping by 4:00 PM next business day. Customers receive an email when orders are ready for pickup or shipping.

Catalog and Pricing Updates

Services and pricing subject to change. Obtain the current catalog by logging into your SAPL webStudio account at saphoto.com and clicking the Catalog button. Or contact your customer service representative.

Image Uploading and Color Management

Saving and Uploading Image Files

Images files for uploading to webStudio, LabPrints, or School Days must be saved in JPEG file format. Files must be in RGB (not CMYK) and 8 bits/channel (not 16). You may open, create, save or upload files on a Windows or Macintosh computer.

We prefer that your images be saved in sRGB working space with the sRGB profile embedded. See the Color Management section in this catalog for more information.

Resizing/Cropping Images – It is not necessary to crop and/or resize your images for uploading to webStudio and LabPrints. Both programs allow you to crop your images when ordering. For example, if ordering an 8x10 and 5x7 from the same image both programs let you crop the same image to the correct aspect ratio. One note: if ordering small prints, while it is not necessary to resize images, doing so will reduce upload time.

Image Size & DPI Recommendations			
Print Size	Image DPI	Print Size	Image DPI
4 x 6	200 - 300	16 x 20	150 - 300
5 x 7	200 - 300	16 x 24	150 - 300
8 x 10	200 - 300	20 x 24	150 - 300
10 x 10	200 - 300	24 x 30	150 - 300
11 x 14	200 - 300	30 x 40	150 - 300

Never use Photoshop to increase image resolution when ordering a large print. Our systems increase image resolution to match the printer, so doing this will not increase print quality and will greatly increase your upload time.

The terminology used in to describe resizing files can be confusing:

Res Up – Increasing image size at the same DPI, or increasing DPI at the same size.

Res Down – Decreasing image size at the same DPI, or decreasing DPI at the same size.

Resize Without Res Up/Down – Increase or decrease image size or DPI without resampling.

Here are two procedures for resizing images in Adobe Photoshop:

Crop Without Res Up/Down – Click the crop tool. Enter the crop width and height crop options boxes (Window / Options). Leave the resolution box blank. Draw and position the crop box.

Crop AND Res Up/Down – Same as above, but enter the desired resolution in the crop options resolution box.

Resize Without Res Up/Down – Select Image / Image Size... from the menu. Uncheck Resample Image. Enter the desired image width or height. The other values will automatically adjust to the correct value.

Resize AND Res Up/Down - Select Image / Image Size... from the menu. Check Resample Image and check Constrain Proportions. Enter the desired image width or height. Enter the desired resolution.

Image Color Correction

We will color and density correct your images at your option. There is no additional charge for color correcting images for most products; please see the individual product description in this catalog for information. For digital photographic printing without color correction, see the Color Management section below.

Color Management

Properly setting your camera and software color management preferences is critical if you are ordering prints without color correction, or any of our press products. Even orders with color correction services should include the camera color profile or Photoshop profile embedded in the image.

Quick Start

Follow these steps to configure color management:

- Adjust camera settings to include Color Profile with image file
- Configure Adobe Photoshop color settings
- Save files with color profile (sRGB or other) embedded
- Calibrate computer monitor (optional)

Frequently Asked Questions

Q: Which color profile should I use with my camera and software?

A: We suggest sRGB for camera, camera software and Photoshop. If your camera includes a special profile (Camera RGB for example), use it. See sRGB vs Adobe RGB section on next page.

Q: How do I get prints to match my monitor?

A: First, be certain to embed your working color profile in the image file you order prints from. We will print your image using the embedded profile and profiles custom-made for our printers. Second, calibrate your monitor as outlined in the Monitor Calibration section. Adjust your lightbox for proper intensity and color temperature.

Q: Should I use a monitor profile as my Photoshop working space?

A: No. Monitor color profiles should only be used with that computer's color management system. Use sRGB or Adobe RGB as your Photoshop working space.

Q: How do I set Adobe Photoshop's Color Settings?

A: See the Adobe Photoshop Color Settings section.

Q: I don't use color management. What should I do?

A: Even if you don't use color management, you should set your camera and camera software

to embed a color profile in your saved images. This will help use produce the highest quality print possible.

Q: I shoot in RAW format. How do I use color management?

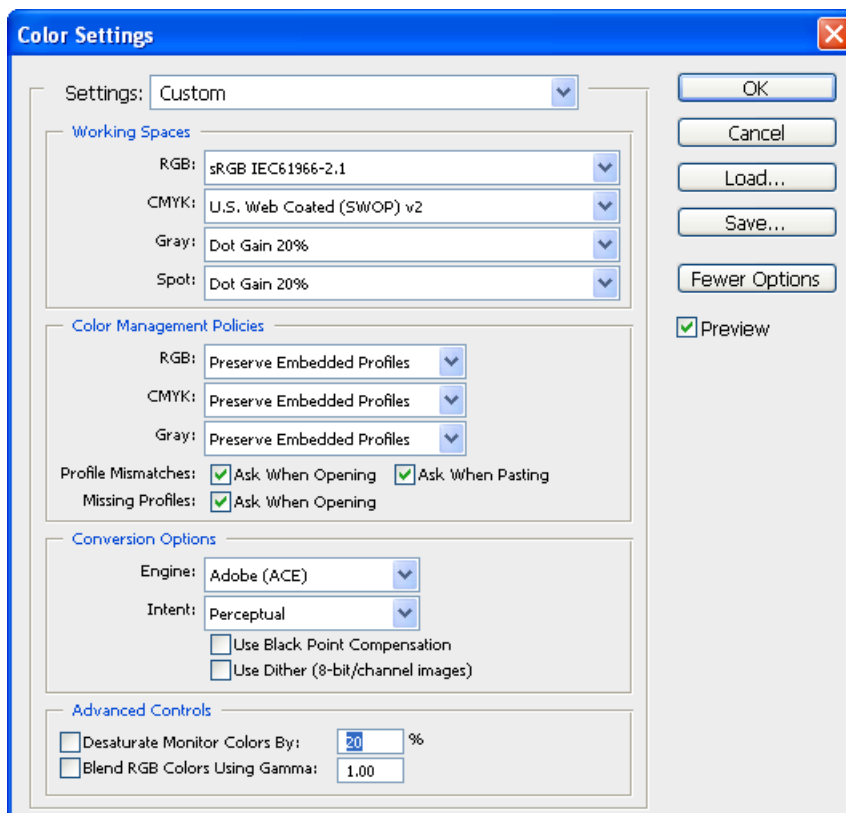
A: Follow the same guidelines as elsewhere in this section. Embed sRGB or your selected working color profile in images converted from RAW to JPG.

Q: Don't I need the lab's printer profile?

A: No. Photoshop will correctly display the image for print-to-monitor matching without having our printer profiles.

Adobe Photoshop Color Settings – It's very important that Adobe Photoshop Color Settings be configured correctly. To view or adjust Photoshop Color Settings, select Edit, then Color Settings from the menu. Select Edit / Color Settings... from the menu:

1. Check the Advanced Mode checkbox.
2. Set RGB Working Space to sRGB.
3. Set RGB Color Management Policies to Convert to Working RGB
4. Select Ask When Opening for Profile Mismatches and Missing Profiles.
5. Set Conversion Options Intent to Perceptual and de-select Use Black Point Compensation.



6. Under Advanced Controls, deselect Desaturate Monitor and Blend RGB.
7. You can save these settings by clicking the Save button.
8. Click OK to apply the new settings.

When saving images in PhotoShop, select ICC Profile in Save Options:

sRGB vs Adobe RGB vs Camera RGB – There are 100's of working color spaces in the industry, but the most commonly used are sRGB, Adobe RGB and ColorMatch. Some cameras have their own Color

Profile, with names like Camera RGB.

We recommend using the sRGB color profile in your camera, camera software and Photoshop. If sRGB is not available in your camera, use Camera RGB or follow the manufacturer's recommendation. Use sRGB in your camera software and Photoshop because it will help ensure color fidelity from camera to monitor to print.

Some trainers and web sites suggest the "Adobe RGB" color profile. We don't recommend this for photographic work, but nevertheless we can accept your images saved in this color space. We recommend sRGB as your Photoshop working color space; Adobe RGB is *not* required if you are using Adobe Photoshop.



Monitor Calibration – If you want your monitor to match your SAPL print work, your monitor must be calibrated. Monitor calibration can be tricky since there are many factors which affect your monitor's and the print's appearance. Here are some tips to help calibrate your monitor.

1. Purchase a print viewing lightbox with color-correct D65 bulb.
2. Reduce the ambient light level in the room so that it's dim, but not dark.
3. Remove any reflections from the monitor screen: close blinds, reposition lights.
4. Clean your monitor's screen using distilled water or lens cleaner (not glass cleaner!).
5. Purchase a monitor calibration probe and software. Both must be compatible with your monitor. Carefully follow the included directions.
6. Adjust your print lightbox brightness to match your monitor. Create a white background in Photoshop and view the back of a print in the lightbox. If necessary, reduce the lightbox intensity by creating a shield from black foam core with ½ inch drilled holes. Start with a few holes, then drill additional holes until the lightbox is as bright as the monitor. Do not use white foam core or any paper since this may change the lightbox color temperature.
7. To verify your monitor's calibration, order 8x10 prints from several images that include skin tones, neutrals, highlights and shadows. Request that the image be printed without color correction. Open the images in Photoshop. If the prints and monitor nearly match, congratulations! For a closer match, consult your calibration software for monitor tuning guidelines. If the prints and monitor are not close, try calibrating your monitor again, including a careful review of the instructions. Also check your Photoshop Color Settings, and confirm that submitted files for printing in the correct working space and requested no color correction.

Ordering and Design Software



webStudio Manager

This is our most flexible online imaging service. It is both Windows and Macintosh compatible and no special software is required. Upload images from any Internet browser; the images remain on our servers for 60 days (longer if required). Once images are uploaded, submit as many print orders as required for these images. Images can be cropped and rotated online.

webStudio includes these specialty modules:

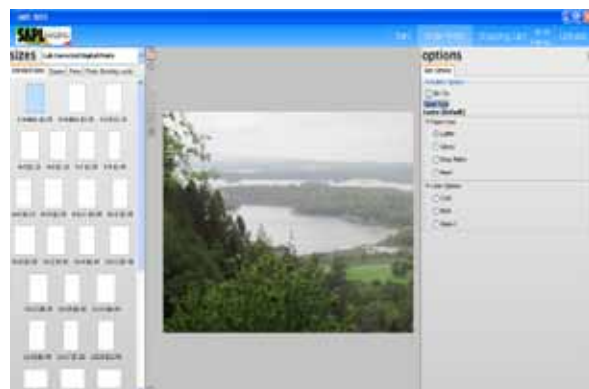
- Pic-a-Pak** - Print package ordering for school and events
- Sports Paks** - Sports and activities templates with custom text; easy package ordering
- Greeting Cards** - Photographic greeting card templates with custom text
- Border Proofs** - Photographic proofs with border templates
- Press Products** - Press printed cards, photo books, proof books, posters, bookmarks, business cards
- MyProPhotosOnline** - See description below

Very large jobs may be delivered to the lab on CD for upload to your webStudio account. webStudio supports film customers with our process-scan-upload (PSU) service. Your film is processed and scanned at high resolution, then uploaded to your webStudio account. All webStudio services are available to PSU customers.



SAPL ROES

SAPL ROES is a complete ordering solution for your Windows PC or Macintosh computer. Users can order any of our photographic, press, inkjet and fine art products. Users may drag images into our pre-defined templates, or design their own templates for use with ROES. Prints may be ordered with or without color correction. Installing ROES is easy: Go to www.saphoto.com and click the "ROES Ordering" button.



MyProPhotosOnline.com

MyProPhotosOnline (MPPO) is part of webStudio Manager. This service makes it easy for the studio to sell prints through a customized web site hosted by SAPL Imaging. We take care of the entire process: credit card transaction, order confirmation and direct shipping. Setting up an online job takes just a minute, and you have complete control over print pricing, security and event duration. There is a small fee for using MPPO. Click the webStudio Help button for order setup procedures.

MPPO Costs - Your costs for using MPPO include the Hosting Fee, Order Charge and Prints Costs. Shipping charges are paid by your customer.



Hosting Fee - \$14.95 per month includes unlimited MPPO online events and unlimited images. There is no charge during months when no events are online. Hosting fee is waived during months where MPPO lab expenses exceed \$200.

Order Charge - There is a 10% charge of the total order amount (excluding shipping & tax) for each MPPO order that is fulfilled. Orders which are not fulfilled (credit card not approved or order canceled) will not be charged.

Printing Cost - You will be charged for the cost to print and finish the order per our catalog pricing. Duplicate prints will be discounted per the catalog.

Shipping cost - A shipping charge of \$4.90 is added to all MPPO orders for jobs where the studio has requested lab shipping. Shipping is paid by your customer. The studio has the option of delivering MPPO orders themselves and no shipping charge is added to these orders.

MPPO Revenues - MPPO revenue and fees are reconciled each calendar month. SAPL will issue a check in the amount of your {total revenues + sales tax - shipping cost} within 5 business days after the close of each month. You will be separately invoiced for MPPO Fee, Order Charges and Printing Costs.

LabPrints

SAPL Imaging is an authorized LabPrints service provider. LabPrints Flush Album Designer and Matted Album Designer software for Windows and Macintosh are very popular wedding album design, layout and ordering tools.



Digital Photo Prints, Proofs & Packages



Digital File Proofing – Print Only

Our economical print-only proofs are printed without any color or density adjustment to your file. Your files must have an imbedded ICC profile (sRGB or Adobe RGB) for Print Only to work. Files without an embedded profile will be assigned sRGB.



- Printed on Lustre photographic paper
- Lab will not adjust image density/color
- Filename & Studio printed on back of print
- Minimum 20 image files per order
- Optional spiral binding (100 proofs per binding)
- Wallet* proofs include file name at bottom of image
- Wallet 2-up** same image for both prints
- Available with webStudio and CD orders

Print Size	20+ files ea	Print Size	20+ files ea
2.5x3.5 Wallet*	\$ 0.32	4x5	0.29
Wallet 2-up**	0.50	4x6	0.29
3x5	0.29	5x5	0.39
		5x7	0.69
Spiral Binding	4.95		

Digital File Proofing – Color Corrected

Our finest proofs are individually color and density corrected for camera exposure, lighting and color balance variations.



- Printed on Lustre or Glossy photographic paper
- Filename & Studio printed on back of print
- Minimum 20 image files per order
- Optional spiral binding (100 proofs per binding)
- Wallet* proofs include file name at bottom of image
- Wallet 2-up** same image for both prints
- Available with webStudio, CD and LabPrints orders

Print Size	20+ files ea	Print Size	20+ files ea
2.5x3.5 Wallet*	\$ 0.32	4x5	0.49
Wallet 2-up**	0.50	4x6	0.49
3x5	0.49	5x5	0.59
		5x7	0.89
Spiral Binding	4.95		

Border Proofs

- Select a border online from webStudio Ordering
- Templates for 4x6 and 5x7 prints
- No additional charge vs regular proofs

Digital Photographic Prints - Lustre or Glossy Paper

Our Photographic Prints are printed on Fujifilm Crystal Archive Professional Paper in your choice of Lustre or Glossy surfaces. Metallic and Deep Matte surfaces available - see following pages. Ask for our free photo and press paper sampler. *Quantity prices for multiple prints from same image.



- All files color/density corrected unless specified
- Color, B/W or Sepia prints
- sRGB or Adobe RGB preferred colorspace
- RGB jpg files for upload; Add'l formats w/ CD orders
- Quantity pricing for multiple prints per image
- Custom print sizes available at no additional cost
- Available with webStudio, ROES, LabPrints and CD orders

Lustre and Glossy Photographic Paper					
Print Size	1	2 - 10*	2 - 25*	2 - 50*	2 - 100*
8-up Wallet	\$ 3.99	\$ 2.85	\$ 1.95	\$ 1.50	\$ 1.25
3x5	1.26	0.99	0.55	0.38	0.29
4x4	1.55	1.15	0.65	0.42	0.32
4x5	1.26	0.99	0.55	0.38	0.29
4x6	1.26	0.99	0.55	0.38	0.29
<i>*** See Digital Proofing section for quantity discount proof prices ***</i>					
4x8	0.79	0.69	0.59	0.49	0.49
5x5	1.55	1.15	0.65	0.42	0.32
5x9	2.95	-	-	-	-
5x10	2.95	-	-	-	-
5x14	3.00	2.40	1.60	1.25	1.00
5x15	4.25	-	-	-	-
5x30	9.50	7.95	6.95	-	-
5x7	2.49	1.65	0.99	0.75	0.60
6x9	2.95	-	-	-	-
7x10	3.99	-	-	-	-
8x8	3.99	2.85	1.95	1.50	1.25
8x10	3.99	2.85	1.95	1.50	1.25
8x12	4.30	3.65	2.65	1.99	1.35
9x10	4.30	3.65	2.65	1.99	1.35
9x14	6.80	5.75	4.35	3.10	2.90
10x10	3.95	3.45	2.40	1.85	1.15
10x12	4.95	4.45	3.10	2.35	1.60
10x13	5.25	4.60	3.25	2.50	1.75
10x14	6.80	4.80	3.50	2.60	1.85
10x15	6.80	4.80	3.50	2.60	1.85
10x20	8.60	6.95	5.25	3.75	2.75
10x26	11.95	8.95	7.25	6.25	5.95
10x30	11.95	8.95	7.25	6.25	5.95

continued on next page

Digital Photographic Prints, continued

Lustre and Glossy Photographic Paper					
Print Size	1	2 - 10*	2 - 25*	2 - 50*	2 - 100*
11x11	5.25	4.60	3.25	2.65	2.25
11x14	7.95	6.50	4.80	3.70	3.25
11x16	8.25	6.75	5.60	4.60	3.95
11x28	14.95	11.95	8.95	7.25	6.25
12x12	5.25	4.75	3.95	3.25	2.95
12x18	12.95	9.95	8.95	8.95	6.95
12x24	12.95	11.95	9.95	8.75	7.50
12x36	16.95	13.95	11.95	10.95	8.95
13x20	14.95	14.75	11.95	7.25	5.45
14x20	18.95	13.75	10.95	7.25	5.45
15x15	15.95	13.75	10.95	7.25	5.45
15x20	18.95	14.75	11.95	7.25	5.45
15x30	25.95	21.95	17.95	15.95	11.95
16x16	16.95	13.75	10.95	7.25	5.45
16x20	18.95	14.75	11.95	8.95	7.95
16x24	28.95	21.95	16.95	11.95	9.95
18x24	28.95	21.95	16.95	11.95	9.95
20x20	28.95	21.95	16.95	11.95	9.95
20x24	28.95	21.95	16.95	11.95	9.95
20x30	35.95	27.50	19.95	13.95	10.95
24x30	43.95	33.95	25.95	17.95	13.95
24x36	58.95	39.95	29.95	20.95	16.95
28x32	61.95	46.95	36.95	23.95	18.95
30x30	61.95	46.95	36.95	23.95	18.95
30x40	61.95	46.95	36.95	23.95	18.95
30x45	75.95	59.95	49.95	38.95	29.95
30x48	81.95	74.95	63.95	52.95	43.95
30x60	89.95	78.95	68.95	56.95	47.95
30x80	129.95	109.95	78.95	66.95	57.95
30x96	143.50	-	-	-	-

Digital Photographic Prints - Custom Sizes

We will print any custom size between 2x3 and 30x96 inches. The cost is the same as the next largest standard print size.

- Pre-crop your image to the desired print size before uploading and ordering (Do Not resample the image when resizing)
- Click the Custom Size option in webStudio Print Ordering and follow the instructions
- Available on Lustre, Glossy, Deep Matte or Metallic Professional Paper
- Available with webStudio and CD orders

Digital Photographic Prints - Metallic & Deep Matte Papers

Fujifilm Crystal Archive Metallic Pearl has exceptional gloss and a pearlescent finish that gives your image a 3-dimensional quality. High color saturation and bold blacks.

Fujifilm Crystal Archive Deep Matte has a perfectly smooth, non-reflective surface (more-so than Lustre paper).

All Fujifilm Crystal Archive papers have the industry's best image stability for worry-free display and image keeping. Ask for our free photo and press paper sampler. *Quantity prices for multiple prints from same image.

- All files color/density corrected unless specified
- Color, B/W or Sepia prints
- sRGB or Adobe RGB preferred colorspace
- RGB jpg (upload); Additional file types w/ CD orders
- Call for quantity pricing over 10 prints per image
- Custom print sizes available at no additional cost
- Available with webStudio, ROES, CD and LabPrints orders

Print Size	Metallic Pearl		Deep Matte	
	1	2 - 10*	1	2 - 10*
8-up wallets	\$ 3.90	\$ 3.10	call	call
3x5	1.19	0.95	\$ 1.76	\$ 1.38
4x4	1.19	0.95	2.17	1.71
4x5	1.19	0.95	1.76	1.76
4x6	1.19	0.95	1.76	1.38
4x8	1.39	1.05	1.10	call
5x5	2.00	2.00	2.17	1.61
5x7	2.65	1.95	2.90	call
5x10	3.80	3.05	4.13	call
5x14	3.90	3.90	4.20	call
5x30	12.30	12.30	13.30	11.13
6x9	3.45	3.15	call	call
7x10	3.95	3.10	4.55	call
8x10	3.95	3.10	4.55	call
8x8	3.95	3.10	call	call
8x12	4.75	3.95	5.75	call
10x10	6.95	5.95	5.53	4.83
10x13	7.95	6.45	7.35	6.44
10x14	7.95	6.45	9.52	6.72
10x15	7.95	6.45	9.52	6.72
10x20	11.95	9.95	12.04	9.73
10x26	14.95	12.95	14.50	11.67
10x30	16.95	14.95	14.50	11.67

continued on next page

Metallic & Deep Matte Prints, continued

Print Size	Metallic Pearl		Deep Matte	
	1	2 - 10*	1	2 - 10*
11x11	7.95	6.45	7.35	6.44
12x12	7.95	6.45	9.31	7.84
12x18	19.95	call	18.13	16.73
12x24	18.95	14.95	18.13	16.73
13x20	21.95	17.95	20.93	17.85
14x20	21.95	17.95	23.73	19.25
15x15	21.95	17.95	22.33	19.25
15x20	21.95	17.95	23.73	19.25
15x30	26.95	22.95	36.33	30.73
11x14	7.95	6.45	9.50	6.44
16x16	21.95	17.95	23.73	19.25
16x20	21.95	17.95	23.75	call
16x24	32.95	25.95	37.73	27.93
18x24	32.95	25.95	37.73	27.93
20x20	32.95	25.95	37.83	27.93
20x24	32.95	25.95	37.75	call
20x30	43.95	34.95	49.95	call
24x30	64.95	54.95	61.50	call
24x36	69.95	58.95	79.95	call
28x32	80.50	80.50	86.73	65.73
30x30	74.95	63.95	86.73	65.73
30x40	79.95	63.95	86.73	65.73
30x60	145.95	109.95	125.93	110.53
30x80	155.95	125.95	181.93	153.93
30x96	179.95	145.95	200.90	call

Retouching Services

Expert retouching services from simple to complex. Standard retouching for blemishes, wrinkles. Brace removal and teeth whitening. Custom retouching includes head swaps, figure removal, background changes, extensive blemishes, damaged negatives. To obtain per image pricing, upload your image(s) and submit a print order with a note requesting a quote.

- Artwork can be ordered archived to CD
- Available with all orders

Retouching Service	per Image
Retouching (standard) - 1 Head	call
Retouching (standard) - 2-4 Heads	call
Retouching (standard) - 5+ Heads	call
Brace Removal - per Head	call
Artwork - Extensive Retouching (per hour, min. 15 minutes)	call
Archive Retouched to CD (per Order)	call

Gallery Wraps

Our Gallery Wraps are printed in-house on Fine Art canvas, then protected with a low-lustre coating before mounting. Frame depths of 1.5" and 3.0", and includes paper backing and hangers.

- Adobe Photoshop templates available in webStudio
- Size image per "Total Image Size" to allow for edge depth and wrap dimensions. Set image resolution to 300dpi.
- Order using webStudio (Gallery Tab), ROES or CD



Gallery Wraps - 1.5" Edge Depth			
Face Dimension	Total Image Size	Edge Depth	Price
8x8	11.25 x 11.25	1.5	\$ 65.00
8x10	11.25 x 13.25	1.5	65.00
10x10	13.25 x 13.25	1.5	75.00
10x20	13.25 x 23.25	1.5	100.00
10x30	13.25 x 33.25	1.5	130.00
11x14	14.25 x 17.25	1.5	75.00
16x16	19.25 x 19.25	1.5	95.00
16x20	19.25 x 23.25	1.5	95.00
16x24	19.25 x 27.25	1.5	110.00
20x20	23.25 x 23.25	1.5	110.00
20x24	23.25 x 27.25	1.5	110.00
20x30	23.25 x 33.25	1.5	150.00
24x30	27.25 x 33.25	1.5	150.00
24x36	27.25 x 39.25	1.5	200.00
30x30	33.25 x 33.25	1.5	195.00
30x40	33.25 x 43.25	1.5	225.00

Gallery Wraps - 3.0" Edge Depth			
Face Dimension	Total Image Size	Edge Depth	Price
10x20	16.25 x 26.25	3.0	\$ 125.00
10x30	16.25 x 36.25	3.0	165.00
16x16	22.25 x 22.25	3.0	120.00
16x20	22.25 x 26.25	3.0	120.00
16x24	22.25 x 30.25	3.0	155.00
20x20	26.25 x 26.25	3.0	155.00
20x24	26.25 x 30.25	3.0	155.00
20x30	26.25 x 36.35	3.0	195.00
24x30	30.25 x 36.25	3.0	210.00
24x36	30.25 x 42.25	3.0	255.00
30x30	36.25 x 36.25	3.0	250.00
30x40	36.25 x 46.25	3.0	300.00

Wedding and Portrait Albums Lay-Flat Albums

Our Wedding and Portrait Albums are printed on Fujifilm Crystal Archive Photographic Paper. They are an affordable alternative to high-end albums, or suitable for parents' albums and portrait sessions.



Album pages are hinged to reveal the entire page for both one- and two-page spread layouts. Pages are lustre coated at no additional cost. Our Premium Leatherette cover is standard, which is padded on front and back.

Pricing is for the cover + pages (per side). For example, an 8x8, 20 page album costs \$127.00.

Designing - Design your lay-flat album pages using Adobe Photoshop and our templates (download from webStudio / Lay-Flat Photo ordering). Finished page dimensions are the "Album Size". Album pages are 1/8" larger than the finished size to allow for trimming. Pages may be single or 2-page spreads in any combination (single pages must be in pairs). Name your files beginning with 1000 to ensure proper sorting.

Lay-Flat Albums are limited to 20, 24, 30, 36 or 40 sides per album. If the first page starts on the left, the opening right page will be black and there are 19, 23, 27, 31, 35 or 39 sides per album. Orders with more than 40 sides will be printed in a second album.

Available with color-corrected pages or file-to-print. Please verify that your monitor is accurately calibrated to ICC standards when ordering file-to-print.

Order using webStudio or LabPrints.

Color Corrected Albums or File-to-Print		
Album Size	Premium Leatherette Cover	Photo Paper (per side)
8 x 8	47.00	4.00
8 x 10 Portrait	67.00	4.00
10 x 10	67.00	5.00
11 x 14 Portrait	call	5.00
12 x 12	100.00	5.00

Digital Photographic Proof Books

- Printed on one side of photographic paper
- 4 or 6 images/8x10 page
- 9 images/10x13 page
- Filename printed under each image
- Page background black or white
- Lustre or glossy photo paper
- Optional cover page includes title and image
- Optional coil binding
- Available with webStudio and CD orders



Proofbook	Price each
8x10 Proof Page - 4 img/pg	\$ 1.75
8x10 Proof Page - 6 img/pg	1.75
10x13 Proof Page - 9 img/pg	2.60
Cover Page	4.95
Coil Binding	2.00

Pic-a-Pak Event & School Digital Packages

- For school and event photography
- Minimum order \$10.00
- Prints are center-cropped
- Images must have consistent lighting and exposure
- Not available for weddings or non-school portraits
- webStudio Pic-a-Pak and CD orders

Package Unit	each	Package Unit	each
8 - wallets	\$ 1.58	2 - 3x5, 4 - wallets	\$ 1.58
4 - wallets	0.79	1 - 3x5, 4 - wallets	1.58
8 - mini-wallets	0.79	2 - 3x5, 8 - mini-wallets	1.58
16 - mini-wallets	1.58	2 - 3x5, 1 - 5x7	1.58
1 - 3x5	0.50	1 - 4x5, 1 - 5x7, 2 - wallets	1.58
4 - 3x5	1.58	2 - 4x5, 1 - 5x7	1.58
1 - 4x5	0.50	2 - 4x5, 4 - wallets	1.58
2 - 4x5	0.79	2 - 4x5, 8 - mini-wallets	1.58
4 - 4x5	1.58	4 - wallets, 8 - mini-wallets	1.58
1 - 4x6	0.50	1 - 5x7, 4 - wallets	1.58
4 - 4x6	1.95	2 - 3x5	0.79
1 - 4x8	0.79		
1 - 5x7	0.79		
2 - 5x7	1.58		
1 - 8x10	1.58		
1 - 10x13	3.25		
1 - 10x15	3.75		
1 - 11x14	4.25		
1 - 16x20	16.95		
Specialty Items			
3.5" Photo Button	\$ 1.95		
Photo Magnet	1.95		
Trader Cards (2 sides)	5.99/8		
Luggage Tag	3.95		
Key Chain	3.95		
Memory Mate Mounts			
	each		
8x10 / 5x7	\$ 0.95		
5x7 / 5x7	0.65		
5x7 / 3x5	0.50		
8x10 indiv	0.55		
5x7 indiv	0.40		

Sports and Activities Digital Packages

- Packages and Templates for Sports and Activities, including these and more: Football, Basketball, Baseball, Softball, Cheerleading, Track, Cross Country, Golf, Band, Orchestra, Ballet, Volleyball (see next page)
- Template styles Traders, Magazine Covers, Memory Mate (team + individual), key chain, luggage tag styles for most activities
- Minimum order \$10.00
- Must have consistent lighting and exposure
- Images must be suitable for center-cropping
- Available with webStudio Sport-Paks and CD orders



Package Print Size	each	Memory Mate Mounts	each
8x10	\$ 1.58	8x10 / 5x7	\$ 0.95
5x7	0.79	5x7 / 5x7	0.65
2-3.5x5	0.79	5x7 / 3x5	0.50
4-wallets	0.79	8x10 indiv	0.55
8-mini wallets	0.79	5x7 indiv	0.40
10x13	3.25		
10x15	3.75		
Specialty Items			
Memory Mate 8x10	1.95	3.5" Photo Button	\$ 1.95
Magazine Cover 8x10	1.95	Photo Magnet	1.95
Trader Cards (2 sides)	5.99/8		
Luggage Tag	3.95		
Key Chain	3.95		

Sports & Activities Templates - Memory Mates

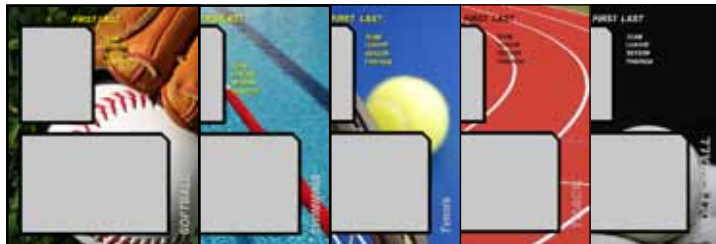
8x10 print with theme background

Team and individual images

Subject & team information fields



Baseball Basketball Cheer Drill Team Football Golf Martial Art Soccer



Softball Swimming Tennis Track-XC Volleyball



Ballet Band Choir Dance Orchestra Tap

Key Chain Fob

Available for most Memory Mate sports and activities

2x2.75" clear key fob & chain

Front and Back Illustrated



Baseball Ballet

Luggage Tags

Available for most Memory Mate sports and activities

2.25x3.5" clear luggage tag

Front & back illustrated



Baseball Ballet

Sports & Activities Templates - Traders

2.25x3.25" photographic

Front: photo (full bleed)

Back: subject & team information fields



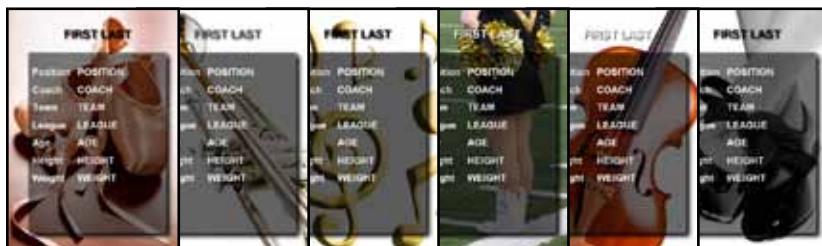
Baseball Basketball Cheer Drill Team Football Golf Generic Soccer



Softball Swimming Tennis Track-XC Volleyball



Front of Trader



Ballet Band Choir Dance Orchestra Tap

Magazine Covers

Available for most sports and activities shown in Memory Mates

8x10" borderless print

Subject name field



Basketball



Band

Photo Greeting Cards

- Classic Slimline Photo Greeting Cards
- Templates for Christmas, Easter, Hanukkah, Holidays
- Up to three lines of text
- Printed one side on lustre surface photographic paper
- 4x8, 4x6 and 5x7 sizes (varies by design)
- Includes envelopes
- Available with webStudio and CD orders

Print Size	15-49	50-74	75-99	100-199	200-399	400+
4X8	\$ 0.80	\$ 0.75	\$ 0.69	\$ 0.55	\$ 0.47	\$ 0.42
5X7	0.86	0.81	0.72	0.58	0.50	0.45
4X6	0.69	0.49	0.40	0.29	0.29	0.29
Texture ea	\$ 0.15					
Coating ea	0.20					

Fine Art (Inkjet) Prints

- Printed with Epson UltraChrome inks for excellent color and image permanence.
- Somerset Velvet Watercolor and Fujifilm Artist's Canvas papers
- Includes color correction
- Print mounting is optional - see Print Services
- Call for Custom Sizes and additional standard sizes
- Available with webStudio, ROES, CD, Scans and LabPrints orders

Print Size	Watercolor	Canvas
8x10	\$ 25.00	\$ 25.00
11x14	38.00	38.00
16x20	58.10	58.10
20x24	69.00	69.00
20x30	85.00	85.00
24x30	100.00	100.00
24x36	125.00	125.00
30x40	150.00	150.00
40x60	225.00	225.00
Custom Sizes up to 40x96 - Call for pricing		

Impressions Press Products



SAPL Press Products

Our press products are produced with the same attention to detail and color fidelity of our photographic prints. All jobs are individually pre-flighted before printing (spelling errors not included). Pages are manually color-corrected (no color correction is available). Proofs for your large orders are available for a nominal charge.

Ordering Press Products

Press Products may be ordered online in three ways:

Adobe Photoshop Pages and webStudio Ordering - The most flexible ordering method preferred by professionals. Offers the largest selection of product types and sizes of our ordering methods. Create your book pages/spreads/cover or card sides in Photoshop using our size guide templates available online. Or use LumaPix or any other similar application.

Digilabs - A free application for Windows and Macintosh users. Design and order Cards and Books from a single program. Good for non-Photoshop users. Requires program download from www.saphoto.com

LabPrints - Use the optional LabPrints Composite Designer to create book pages and spreads. Upload project as a LabPrints job. Contact the lab before using LabPrints to design books.

About Our Press Papers

Press papers have several characteristics that affect the appearance, feel, durability and overall quality of the printed piece. Text paper is used for book pages, documents and flyers. Cover paper is thicker and is used for cards, book covers and bookmarks. Paper weight is expressed in pounds (lb). 100 lb Cover is about twice the thickness as 100 lb text due to how basis weight is measured. A paper's finish refers to its surface texture. Since paper color will affect image color, we use the whitest papers available for a given paper type.

Ask for our free photo and press paper sampler.

Coated Text and Cover Papers - A smooth finish paper with semi-gloss sheen.

Uncoated Text and Cover Papers - A smooth finish paper with no sheen.

Pearl Cover - Nearly smooth finish with pearlescent white color on both sides. Shimmers in the light.

Linen Cover - A textured paper with appearance of linen cloth. White, non-glossy.

Pebble Cover - Stippled texture finish, brilliant white, non-glossy.

Watercolor Cover - Textured finish similar to artist's watercolor paper. Some solid colors may not print at full density due to paper texture.

Press Printed Greeting Cards

Press printed Greeting Cards are available in folded, tri-fold and flat (postcard) styles, with horizontal or vertical orientations. Folded cards are printed full bleed on all four surfaces; tri-fold cards are printed on six surfaces; flat cards are printed front and back. 5x7 folded cards open to 10x7 inches. 4x5.5 folded cards open to 8x5.5 inches. 5x5 tri-fold cards open to 15x5 inches.

Papers available include: Watercolor Art, Linen Art, Pearl Starwhite, Pebble stippled white, Coated Card Stock and Uncoated Card stock, all 100 lb cover weight.



Order using webStudio ,SAPL Press by DigiLabs or in-store. With webStudio, you create the card in Adobe Photoshop, and submit one JPEG file for each card surface. Download our folded greeting card templates for webStudio by logging into webStudio and clicking the Press Products button.

To order with SAPL Press by DigiLabs, download our free card software from saphoto.com. With DigiLabs software you design and order cards from the program. (Not all card sizes may be available with DigiLabs software.)

Cards are color-corrected at no additional charge. Images must be saved with sRGB profile embedded. Cards available only in packages of 25 cards each. Minimum order 1 package (25 cards). Envelopes are included with most card sizes.

Samples or proofs are available with webStudio ordering. Samples consist of 4 of any card size printed on any of our papers for \$8.95. One paper type per sample order.

Press Printed Greeting Cards							
Card	Paper	1-2	3-5	6-9	10-19	20-45	46+
2x3.5 Flat and Folded - see Rep and Business cards							
2x7 Flat - see Bookmarks							
4x5.5 Folded	Standard	\$26.50	\$25.50	\$22.70	\$21.50	\$19.30	\$18.45
	Art	27.50	26.50	23.50	22.30	20.10	19.10
	Pearl, Pebble	30.50	29.50	26.50	24.50	23.50	21.50
4x5.5 Flat	Standard	16.80	16.20	14.40	13.70	12.30	11.70
	Art	17.80	17.10	15.20	14.50	13.00	12.40
	Pearl, Pebble	18.00	17.00	16.00	14.00	13.00	12.00
5x7 Folded	Standard	33.00	31.80	28.20	26.80	24.10	22.90
	Art	37.00	35.60	31.70	30.10	27.00	25.70
	Pearl, Pebble	41.00	39.00	38.00	34.00	32.00	30.00
5x7 Flat	Standard	19.50	18.80	16.70	15.80	14.20	13.60
	Art	21.50	20.70	18.40	17.50	15.70	14.90
	Pearl, Pebble	23.50	22.50	20.50	19.50	18.50	17.50

continued on next page

Press Printed Greeting Cards

Card	Paper	1-2	3-5	6-9	10-19	20-45	46+
5x7 Tri-Fold	Standard	39.50	38.00	33.80	32.10	28.80	27.40
	Art	44.50	42.80	38.10	36.20	32.50	30.90
	Pearl, Pebble	48.50	46.50	41.50	37.50	35.50	33.50
5x5 Folded	Standard	33.00	31.80	28.20	26.80	24.10	22.90
	Art	37.00	35.60	31.70	30.10	27.00	25.70
	Pearl, Pebble	41.00	39.00	38.00	34.00	32.00	30.00
5x5 Flat	Standard	19.50	18.80	16.70	15.80	14.20	13.60
	Art	21.50	20.70	18.40	17.50	15.70	14.90
	Pearl, Pebble	23.50	22.50	20.50	19.50	18.50	17.50
5x5 Tri-Fold	Standard	39.50	38.00	33.80	32.10	28.80	27.40
	Art	44.50	42.80	38.10	36.20	32.50	30.90
	Pearl, Pebble	48.50	46.50	41.50	37.50	35.50	33.50
4x6 Flat	Standard	19.50	18.80	16.70	15.80	14.20	13.60
	Art	21.50	20.70	18.40	17.50	15.70	14.90
	Pearl, Pebble	23.50	22.50	20.50	19.50	18.50	17.50
4x8 Flat	Standard	19.50	18.80	16.70	15.80	14.20	13.60
	Art	21.50	20.70	18.40	17.50	15.70	14.90
	Pearl, Pebble	23.50	22.50	20.50	19.50	18.50	17.50
4x10.5 Flat	Standard	call					
	Art	call					
	Pearl, Pebble	call					
5.5x8.5 Folded	Standard	39.50	38.00	33.80	32.10	28.80	27.40
	Art	44.50	42.80	38.10	36.20	32.50	30.90
	Pearl, Pebble	48.50	46.50	41.50	37.50	35.50	33.50
5.5x8.5 Flat	Standard	19.50	18.80	16.70	15.80	14.20	13.60
	Art	21.50	20.70	18.40	17.50	15.70	14.90
	Pearl, Pebble	23.50	22.50	20.50	19.50	18.50	17.50
5.5x11 Tri-Fold	Standard	49.50					
	Art	54.50					
	Pearl, Pebble	59.50					
7.25x7.25 Flat	Standard	33.00					
	Art	37.00					
	Pearl, Pebble	41.00					
7.25x7.25 Folded	Standard	39.50					
	Art	44.50					
	Pearl, Pebble	48.50					
8.75x8.75 Flat	Standard	33.00					
	Art	37.00					
	Pearl, Pebble	41.00					

continued on next page

Press Printed Greeting Cards

Card	Paper	1-2	3-5	6-9	10-19	20-45	46+
8.75x8.75	Standard	39.50					
Folded	Art	44.50					
	Pearl, Pebble	48.50					
8.5x11 Folded	Standard	39.50	38.00	33.80	32.10	28.80	27.40
	Art	44.50	42.80	38.10	36.20	32.50	30.90
	Pearl, Pebble	48.50	46.50	41.50	37.50	35.50	33.50
8.5x11 Flat	Standard	37.95					
	Art	41.95					
	Pearl, Pebble	45.95					
Prices are per package of 25 cards. Quantity discount with same image files for all cards.							

Press Printed Proof Books - Soft Cover

Press printed Proof Books are soft cover, spiral bound and printed on coated 100lb paper. Soft cover proof books include a single cover image and title. Optional (no cost) image file names printed below each image. Each page includes optional text area for customer/studio/copyright information.



Pages printed on both sides, with 2 or 4 images/side (8x8 book); 4 or 6 images/side (8x10 book); 6, 8 or 12 images/side (8x12 book); 6, 9 or 12 images/side (10x13 book). Minimum book size is 16 pages (16 printed sides front and back). Color correction is optional (with an additional charge per image). Extra pages available in increments of 2 pages (2 sides).

Order with webStudio or in-store.

Book Size	No. Pages	1-3 Books	4-24 Books	Add'l Pages
8W x 8H	16 pages	\$ 15.95	\$ 14.95	\$ 0.80
8W x 10H	16 pages	15.95	14.95	0.80
8W x 12H	16 pages	19.95	18.95	1.20
10W x 13H	16 pages	call		
Color Correction per image	charge for first book only	\$ 0.10		

Press Printed Photo Books - Hard Cover

Hard cover books are available in sizes from 5x5 to 10x10 and 8x12 inches. Paper options include 100lb coated text stock and linen textured text. Books are printed full-bleed and include translucent fly sheets front and back.

Hard cover materials include leatherette, padded leatherette and custom photo. Leatherette covers are available in black (other colors coming soon). Premium leatherette covers are thicker than standard leatherette, with an elegant padded front and back surfaces. Photo Covers are wrapped and permanently adhered to the book cover, creating a highly customized product. Custom printed dust jackets are an available option, enhancing the appearance of and protecting your book.



Hard cover books are 20 pages minimum (10 sheets front and back, not including the fly sheets), with additional pages available in increments of 2 pages. Maximum book size is 100 pages (call for other options). Pages printed on white, coated 100lb text stock.

Book templates are available on our website as Adobe Photoshop files (log into webStudio). We urge you to use our templates as a starting point. Detailed instructions are also available online.

Ordering: If creating pages in Photoshop, order using webStudio. LabPrints composites may be ordered as books; please call for ordering information.



Black Leather

continued on next page

Press Printed Photo Books - Hard Cover

continued from previous page

Photo Books - Hard Cover				
Size	Cover	20 pages / book		Extra Pages ea
		1-3	4-24	
4 x 6	Leatherette	39.50	36.30	0.80
<i>Portrait &</i>	Premium Leatherette	44.50	40.90	0.80
<i>Landscape</i>	Custom Photo	48.50	44.60	0.80
	Dust Jacket	8.95	8.20	-
5 x 5	Leatherette	39.50	36.30	0.80
	Premium Leatherette	44.50	40.90	0.80
	Custom Photo	48.50	44.60	0.80
	Dust Jacket	8.95	8.20	-
6 x 9	Leatherette	39.95	36.95	0.80
<i>Portrait &</i>	Premium Leatherette	44.10	40.50	0.80
<i>Landscape</i>	Custom Photo	48.00	44.95	0.80
	Dust Jacket	8.95	8.20	-
8 x 8	Leatherette	49.95	44.95	0.80
	Premium Leatherette	54.20	49.90	0.80
	Custom Photo	62.40	57.40	0.80
	Dust Jacket	10.95	10.10	-
8 x 12	Leatherette	49.95	44.95	1.20
<i>Portrait &</i>	Premium Leatherette	54.20	49.90	1.20
<i>Landscape</i>	Custom Photo	62.40	57.40	1.20
	Dust Jacket	12.95	11.90	-
8.5 x 11	Leatherette	49.95	44.95	1.20
<i>Portrait &</i>	Premium Leatherette	54.20	49.90	1.20
<i>Landscape</i>	Custom Photo	62.40	57.40	1.20
	Dust Jacket	12.95	11.90	-

continued on next page

Press Printed Photo Books - Hard Cover

continued from previous page

Photo Books - Hard Cover				
		20 pages / book		
Size	Cover	1-3	4-24	Extra Pages ea
10 x 10	Leatherette	\$ 49.95	\$ 44.95	\$ 0.80
	Premium Leatherette	54.20	49.90	0.80
	Custom Photo	62.40	57.40	0.80
	Dust Jacket	12.95	11.90	-

Press Printed Photo Books - Soft Cover

Soft cover books are available in sizes from 5x5 to 10x10 inches. Books are printed full-bleed and are perfect bound.

Pages printed on white, coated 100lb text stock, resulting in impressive text and image reproduction. The soft cover is printed both front and back, while the inside cover is white. The cover material is white, 100 lb cover stock.

Soft cover books have a 20 page minimum (10 sheets front and back), with additional pages available in increments of 2 pages.

A blank fly sheet is not included with soft cover books. To add a fly sheet, make your 1st and 2nd images white. Translucent fly sheets are not available with soft cover books.

Book templates are available from our web site as Adobe Photoshop files (log into webStudio). We urge you to use our templates as a starting point. Detailed instructions are also available online.

Ordering: If creating pages in Photoshop, order using webStudio (name pages sequentially starting with 1000.jpg). LabPrints composites may be ordered as books; please call for ordering information.

Photo Books - Soft Cover			
Size	20 pages per book		
W x H	1-3	4-24	Add'l Pages ea.
5 x 5	-	7.95	0.40
4 x 6	-	7.95	0.40
6 x 4	-	7.95	0.40
6 x 9	\$ 16.95	15.95	0.80
9 x 6	16.95	15.95	0.80
8 x 8	16.95	15.95	0.80
8 x 12	24.95	22.95	1.20
8.5 x 11	24.95	22.95	1.20

Press Printed Accordion Mini Books

Accordion Books are available in 3x3 and 2x3 (wallet) sizes. Cover options are Black Leather or Custom Photo (front and back, your image). Includes decorative metallic elastic closure ribbon.
 *Sold in packages of 3 books (minimum order 1 package/3 books).

Download Adobe Photoshop templates from webStudio. Front and back panels must be designed and ordered as spreads.

Available Papers:
 Standard - Coated 100# Cover
 Pebble, Pearl 100# Cover

Order with webStudio or in-store.



Book Type	Paper	Per book*
3x3 Leather Cover	Standard Paper	\$ 6.50
	Pebble, Pearl	8.00
3x3 Photo Cover	Standard Paper	8.50
	Pebble, Pearl	10.00
2x3 Leather Cover	Standard Paper	6.50
	Pebble, Pearl	8.00
2x3 Photo Cover	Standard Paper	8.50
	Pebble, Pearl	10.00

Press Printed Photo Calendars

Press printed calendars are available in styles printed on one side or both sides. Single-side calendar has month and image on single page. Double-side calendar has month on bottom page and image on top page. Images printed full bleed. Printed on white, uncoated 100lb card stock (5x5 also available on Pearl). Order with SAPL Press Software powered by DigiLabs.



Calendar Type*	1-24	25-49	50-99	100-199
11x17 spiral top	\$ 20.95	\$ 19.95	\$ 17.95	\$ 13.95
12x18 spiral top	20.95	19.95	17.95	13.95
8.5x11 spiral top	20.95	19.95	17.95	13.95
11x17 center fold	20.95	19.95	17.95	13.95
5x5 CD (80lb white)	14.00	13.00	11.00	9.00
5x5 CD (Pearl)	16.95	call	call	call
11x17 spiral top - printed one side - spiral bound top 12x18 spiral top - printed one side - spiral bound top 8.5x11 spiral top - portrait or landscape - printed one side - spiral bound top 11x17 center fold - printed two sides - spiral bound center 5x5 CD - desktop in CD jewel case				

Press Printed Bookmarks

Bookmarks are available in 2 x 7 and 2 x 8.5 inch sizes, and are printed on two sides full bleed. Standard coated card stock, Watercolor, Linen, Pebble and Pearl papers. Bookmark templates available from webStudio.



Order with webStudio or in-store.

Size	Paper	50	100	Add'l 50
2 x 7	Standard Paper	\$ 23.00	\$ 30.00	\$ 7.00
	Art Paper	26.50	35.00	8.50
	Pearl, Pebble	29.50	39.50	9.50
2 x 8.5	Standard	23.00	30.00	7.00
	Art	26.50	35.00	8.50
	Pearl, Pebble	29.50	39.50	9.50

Press Printed Rep Cards

Rep Cards are similar to business cards, but are available in different sizes and printed on a wider selection of papers: Linen, Watercolor, Pebble or Pearl papers, as well as standard coated and uncoated white card stock. Dimensions are 2 x 3.5 and 2.5 x 2.5 inches. Folding card hinged at top edge. Color (RGB) printing. Available printed on one or two sides full bleed in packs of 70 cards.



Order using webStudio or in-store. Templates available from webStudio.

Rep Card Type	Paper	70 cards
Two Sides Printed, 2x3.5	Standard	\$ 9.50
	Art	10.50
	Pearl, Pebble	12.50
One Side Printed, 2x3.5	Standard	6.50
	Art	7.50
	Pearl, Pebble	10.00
Two Sides Printed, 2.5x2.5	Standard	9.50
	Art	10.50
	Pearl, Pebble	12.50
One Side Printed, 2.5x2.5	Standard	6.50
	Art	7.50
	Pearl, Pebble	10.00
Folding, Four Sides Printed (2x3.5 when folded)	Standard	15.00
	Art	16.50
	Pearl, Pebble	18.50

Press Printed Business Cards

Press printed Business Cards are 2 x 3.5 inches in size and are printed on white coated 100lb card stock. Color (RGB) printing. Available printed on one or two sides full bleed in packs of 250 cards.



Order using webStudio or SAPL Press by DigiLabs.

Bus. Card Type	Paper	250	500	750	1000
Two Sides Printed	Standard Paper	\$ 30.00	\$ 52.00	\$ 67.00	\$ 75.00
One Side Printed	Standard Paper	25.00	44.00	56.00	62.00

Press Printed Posters

Press printed posters are printed full bleed on one side and are available in 11.5 x 17.5 inch size. Minimum order 25 posters. All posters in an order must be the same image file.

Order using webStudio. Templates available from webStudio

Paper	25 - 49	50 - 99	100 - 199	200 - 299	300+
Standard	\$ 2.00	\$ 1.60	\$ 1.10	\$ 1.00	\$ 0.90
Art	2.20	1.75	1.20	1.10	1.00
Pearl, Pebble	2.60	2.20	1.70	1.60	1.50

Press Printed Stickers

Stickers are 2 x 3 inches and are printed on one side of a sticker material with peel-away liner. One image file per sticker order. Available in packages of 75 stickers; minimum order 75 stickers.

Order using webStudio or in-store.

Sticker Size	Paper	60
2 x 3 inches One side printed Peel-off sticker	Standard Paper	\$ 12.00

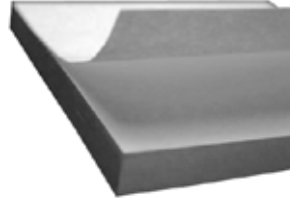
Press Printed Promotional Comp Cards

Promotional Comp Cards are custom-designed and press printed from your image and resume. Available sizes are 8 x 10 and 8.5 x 11 inches (vertical orientations). The one-sided style includes your photo (color or BW), a custom frame surrounding the image, and one line of text. The two-sided style additionally includes your resume printed on the back. Images are color-corrected before printing. Printed on Carolina white 100 lb card stock with matte finish. Available in increments of 25 cards.

Quantity	Printed One Side	Printed Both Sides
	Price per Pack 25	Price per Pack 25
25	\$ 71.95	\$ 75.95
50 - 75	41.48	46.48
100 - 175	26.24	30.49
200 - 275	17.62	23.87
300 - 475	15.08	22.16
500 - 975	13.50	20.00
1000 +	11.25	16.25
Same image and resume on all prints		

Custom Note Pads

Note Pads are a great gift item or promotional tool. You supply the background image, which is printed full-bleed on each sheet at 15% opacity (we will adjust opacity - do not reduce opacity of your image). Actual pad dimensions about 1/8" under nominal due to trimming.



Order using webStudio or in-store. Templates available on webStudio.

Quantity	3x3", 30 sheets/pad 4 pads/pack	6x9", 30 sheets/pad 4 pads/pack
4 packs	\$ 7.50 per pack	\$ 16.00 per pack
8+ packs*	6.95 per pack	14.00 per pack
* pads available in increments of 4 packs		

Playing Cards

Standard sized playing cards printed with your image on the front. Printed on durable playing card material.



Order using SAPL Press Software by DigiLabs.

Quantity	Playing Cards
2+ packs	\$ 16.99 per pack

Finishing Services



Print Mounting

GatorFoam® brand foam core is a durable lightweight board used to mount photographs and other media. It consists of a core of polystyrene foam bonded on both sides with wood fibers impregnated with resin. This provides durability and rigidity as well as moisture resistance. GatorFoam is available in natural (off-white) and black.



Sintra® brand PVC board is lightweight, but rigid and durable. Excellent for mounting applications requiring great durability. Available in bright white and black.

Art Board is a paper and resin combination which is generally used for mounting prints which will be framed. Available in white.

DieBond® is black core aluminum composite with overall thickness of 3mm. It is made of two sheets of .012" aluminum with a thermoplastic core. It is extremely strong and durable, yet lightweight. Excellent for interior and exterior applications.

Call for other sizes and materials.

Print Size	Art Board 1/8"	GatorFoam 3/16"	GatorFoam 1/2"	Sintra 1/8"	DieBond 3mm Black
3x5	\$ 3.25	\$ 4.25	\$ 5.95	\$ 3.95	call
4x5	3.25	4.25	5.95	3.95	call
4x6	3.25	4.25	5.95	3.95	call
5x5	3.25	4.25	5.95	3.95	call
5x7	3.25	4.25	5.95	3.95	call
5x30	15.00	9.95	12.95	14.95	call
7x10	3.25	7.95	9.95	3.95	call
8x8	3.25	7.95	9.95	3.95	call
8x10	3.25	7.95	9.95	3.95	9.00
8x12	5.25	9.95	11.95	6.95	9.00
10x10	5.95	10.95	12.95	6.95	9.00
10x13	5.95	10.95	12.95	6.95	9.00
10x14	5.25	10.95	12.95	6.95	call
10x15	5.25	10.95	12.95	6.95	9.00
10x20	9.95	12.95	14.95	10.95	17.00
10x26	20.00	17.95	18.95	19.95	17.00
10x30	20.00	21.95	22.95	23.95	25.00
11x14	5.25	10.95	12.95	6.95	17.00
11x28	20.00	21.95	22.95	23.95	25.00
12x12	5.25	10.95	12.95	6.95	9.00
12x24	15.00	17.95	18.95	12.95	17.00
13x20	9.50	14.95	16.95	10.95	17.00
14x20	9.50	14.95	16.95	10.95	17.00

continued on next page

Print Size	Art Board 1/8"	GatorFoam 3/16"	GatorFoam 1/2"	Sintra 1/8"	DieBond 3mm Black
15x20	9.50	14.95	16.95	10.95	25.00
15x30	20.00	31.95	33.95	23.95	33.00
16x16	9.50	14.95	16.95	10.95	17.00
16x20	9.50	14.95	16.95	10.95	25.00
16x24	15.00	20.95	23.95	17.95	24.00
18x24	15.00	20.95	23.95	17.95	25.00
20x20	15.00	20.95	23.95	17.95	25.00
20x24	15.00	20.95	23.95	17.95	33.00
20x30	20.00	31.95	33.95	23.95	41.00
24x30	23.50	36.95	37.95	26.95	41.00
24x36	26.00	45.95	48.95	29.95	50.00
28x32	26.00	48.95	50.95	31.95	58.00
30x30	26.00	45.95	48.95	29.95	58.00
30x40	26.00	48.95	50.95	31.95	74.00
30x48	-	58.95	64.95	-	82.00
30x60	-	58.95	76.95	49.95	107.00
Custom size mounting priced as smallest standard size mount print will fit on					

Canvas Mounting - Photographic Prints

The emulsion layer is peeled from a traditional photographic print and bonded to canvas. Available mounted on a stretcher frame, mounted on masonite, or un-mounted.

- AccuCoat is additional - see print coating for prices
- Call for other sizes

Print Size	Mounted on Stretcher Frame	Mounted on Masonite	Not Mounted
8x10	\$ 35.95	call	call
10x10	45.95	call	call
11x14	45.95	call	call
16x20	49.95	call	call
16x24	54.95	call	call
20x24	54.95	call	call
20x30	62.95	call	call
24x30	70.95	call	call
30x40	89.95	call	call

Print Laminating

- Offers exception protection against fingerprints, spills and abuse
- Adds visual depth to image
- Matte or Glossy finishes available

Print Size	Over-Laminant (Matte or Glossy)
5x7	\$ 9.40
8x10	9.40
11x14	13.00
15x30	24.00
16x20	17.50
20x24	21.00
20x30	24.00
30x40	34.00
30x60	51.00

Specialty Print Mounting

- Call for other sizes

Size	Description	Price
5x7	Gold bevel, white art board 1/8"	\$ 5.95
8x10	Gold bevel, white art board 1/8"	7.95
11x14	Gold bevel, white art board 1/8"	9.95
16x20	Gold bevel, white art board 1/8"	14.25

Print Coating and Texturing

- AccuCoat UV Lustre coating
- Embossed linen texture
- Call for other sizes

Print Size	Print Texture	Print Coating
wallet(8up)	\$ 0.25	\$ 0.80
3x5	0.25	0.37
4x4	0.25	0.48
4x5	0.25	0.37
4x6	0.25	0.37
5x5	0.25	0.48
5x7	0.25	0.58
5x10	0.25	0.80
5x30	1.95	2.50
7x10	0.25	0.80
8x8	0.25	0.80
8x10	0.25	0.80
8x12	0.35	1.55
10x10	0.45	1.45
10x13	0.45	1.55
10x14	0.45	1.55
10x15	0.55	1.55
10x20	1.25	2.10
10x26	1.50	2.50
10x30	1.95	2.65
11x14	0.45	1.55
11x28	1.95	2.65
12x12	0.50	1.55
12x24	1.95	2.65
15x15	call	2.10
15x20	1.50	2.10
15x30	3.25	3.25
16x16	1.50	2.10
16x20	1.50	2.10
16x24	2.50	2.65
18x24	2.50	2.65
20x20	2.50	2.65
20x24	2.50	2.65
20x30	3.50	3.25
24x30	3.75	4.75
24x36	4.95	5.95
28x32	call	6.95
30x30	call	5.95
30x40	call	6.95
30x60	call	10.95

Film Services



Film Processing - Roll & Sheet

- In-house processing to Pro standards
- Color Negative, Reversal and B/W film
- Push/pull processing available
- Contact sheets available with overall density and color correction



Film Size	C-41	B/W	E-6 sleeved	E-6 mounted
135 - 12/25	Call	Call	Call	Call
135 - 36	Call	Call	Call	Call
135-24 Process + Contact	Call	-	-	-
135-36 Process + Contact	Call	-	-	-
120	Call	Call	Call	-
220	Call	Call	Call	-
120 Process + Contact	Call	-	-	-
220 Process + Contact	Call	-	-	-
70mm per ft.	Call	-	-	-
4x5 Sheet	Call	Call	Call	-
Roll Push/Pull	Call	Call	Call	-
Sheet Push/Pull	Call	Call	Call	-
Contact Sheet 8.5x11	Call	any film format or type		-

Film Scanning – Roll Film

- At time of film processing only
- Film processing price not included
- Scans saved in .jpg format
- Includes index print and CD

Roll Film Size	4 – 8 MB	10 MB	18 MB	30 MB
135-24	\$ 12.95	\$ 14.95	\$ 18.95	\$ 22.95
135-36	12.95	14.95	19.95	32.95
120/10	5.90	6.95	7.95	9.95
120/12	7.00	8.25	9.95	10.95
120/15	8.80	9.95	11.95	13.95
220/20	11.80	13.90	15.90	19.90
220/24	14.00	16.50	19.90	21.90
220/30	17.60	19.90	23.90	27.90

Film Scanning – Cut Negative/Transparency Film

- Includes color/density correction
- Scans saved in .jpg format
- \$10.00 minimum on 4-6 MB size scans
- Includes index print and CD

Cut Film Size	4-6 MB	26-36 MB	60-80 MB
120/220 per Frame	\$ 3.00	\$ 6.95	\$ 12.95

Roll Film Proofing

- Proofing at the time of film processing
- Film processing included in price
- Price per roll ...no credit for blank frames
- No editing

Film Size	Proof Size	1st set	2nd set	Texture
135 - 24	4x6	\$ 8.40	\$ 4.00	\$ 3.60
135 - 36	4x6	12.65	6.00	5.40
120 - 10	4x5	8.00	4.75	1.50
120 - 12	5x5	8.75	5.60	1.80
120 - 15	4x5	9.95	7.05	2.25
220 - 20	4x5	14.95	9.25	3.00
220 - 24	5x5	16.50	11.25	3.60
220 - 30	4x5	18.95	14.15	4.50

Event Photography Package Printing (Film)

- Available from 35mm, 120/220 and 70mm film
- Schools, proms, sports
- Minimum order \$10.00
- Must have consistent lighting and exposure
- Not available for weddings or non-school portraits

Package Print Size	each	Memory Mate Mounts	each
8x10	\$ 1.58	8x10 / 5x7	\$ 0.95
5x7	0.79	5x7 / 5x7	0.65
2-3.5x5	0.79	5x7 / 3x5	0.50
4-wallets	0.79	8x10 indiv	0.55
8-mini wallets	0.79	5x7 indiv	0.40
10x13	3.25		
10x15	3.75		
Specialty Items			
3.5" Photo Button	\$ 1.95		
Photo Magnet	1.95		
Trader Cards (2 sides)	8.99/12		

Greeting Cards (Film)

- Available from color negative 35mm and 120/220
- Price includes envelopes
- Optical print card personalization setup charge \$10.00

Print Size	15-49	50-74	75-99	100-199	200-399
4X8	\$ 0.80	\$ 0.75	\$ 0.69	\$ 0.55	\$ 0.47
5X7	0.86	0.81	0.72	0.58	0.50
4X6	0.69	0.49	0.40	0.29	0.29
Texture ea	\$ 0.15				
Coating ea	0.20				

B&W Optical Printing

- Custom print includes cropping, dodging and burning
- Printed on matte or glossy RC Polycontrast B&W paper

Print Size	First Print	Additional Prints
5x7	\$ 7.95	\$ 4.95
8x10	11.95	6.95
11x14	17.95	9.75
16x20	32.95	16.95
20x24	32.95	16.95
20x30	45.00	22.95
24x30	58.95	29.95

35mm Slides and Dupes

- Duplicates from 35mm slide originals

Service	# Duplicates per original slide				
	1	2-10	11-25	26-100	101-500
Mounted dupe	\$ 1.05	\$ 0.75	\$ 0.65	\$ 0.50	\$ 0.40
Mounted slide from digital file	7.95	3.00			